

ALL HEART/PHASE Conference 2015



Presented by:

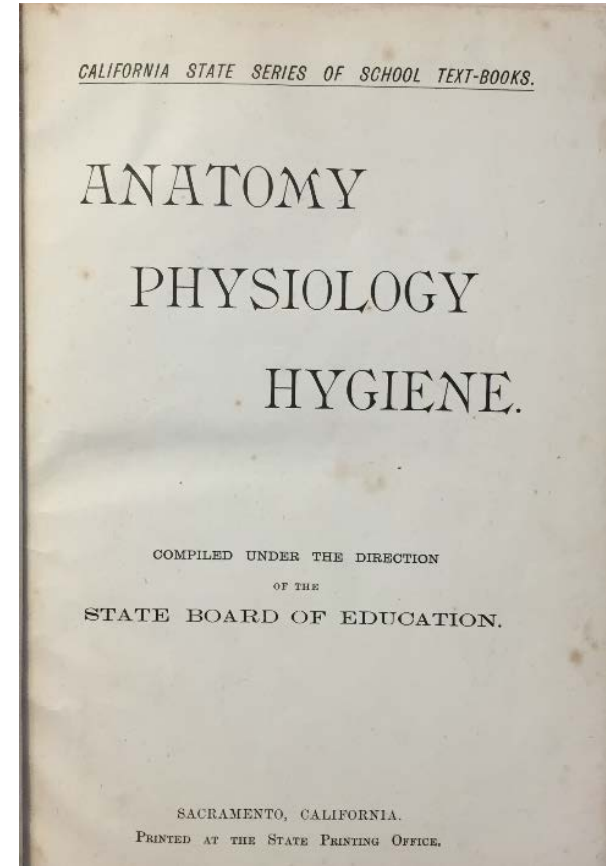
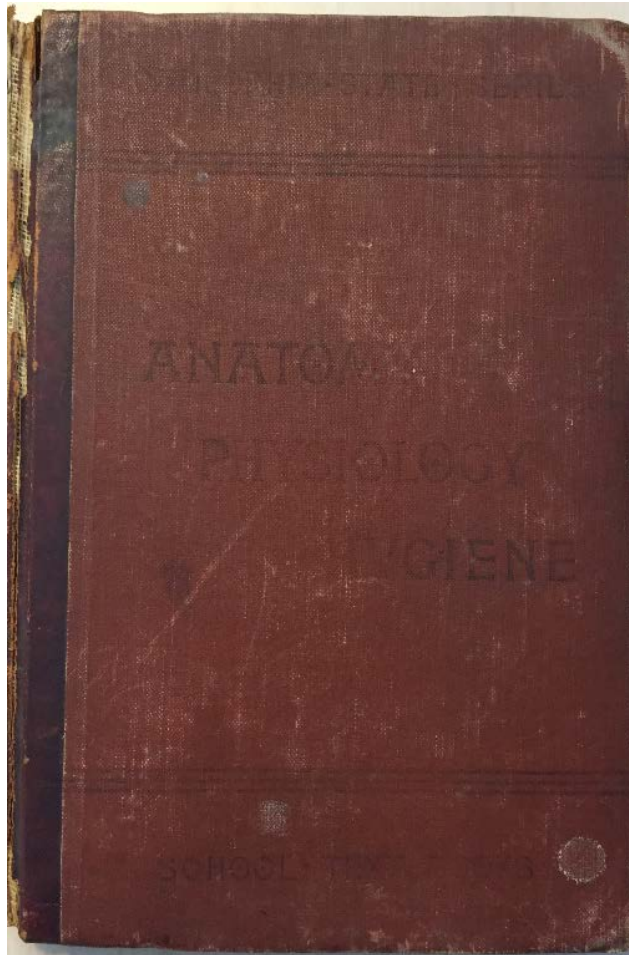
Marc Jaffe, MD

Associate Clinical Professor of Medicine, UCSF

Kaiser Permanente Northern California

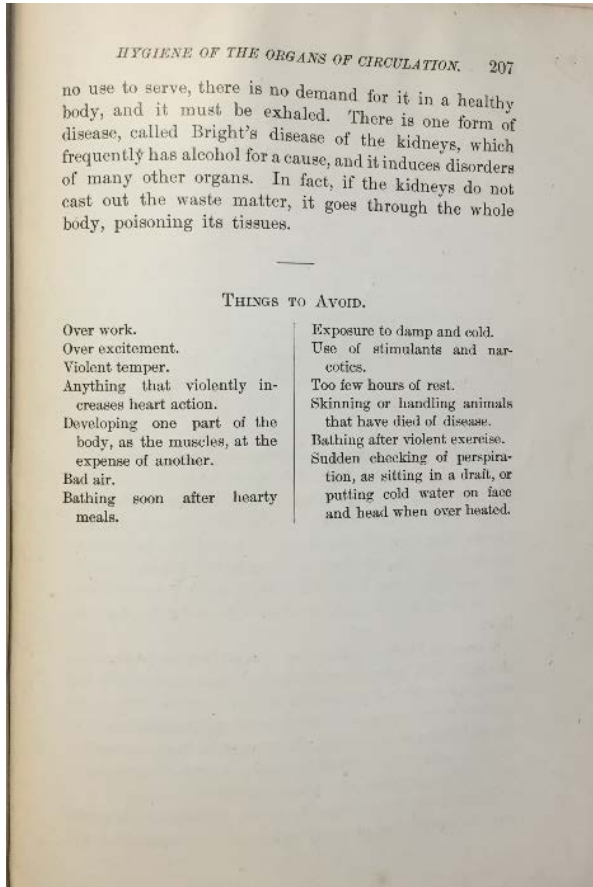
South San Francisco Medical Center

Translation Defined



California State Series of School Text-books, Published 1891

Cardiovascular Health 1891

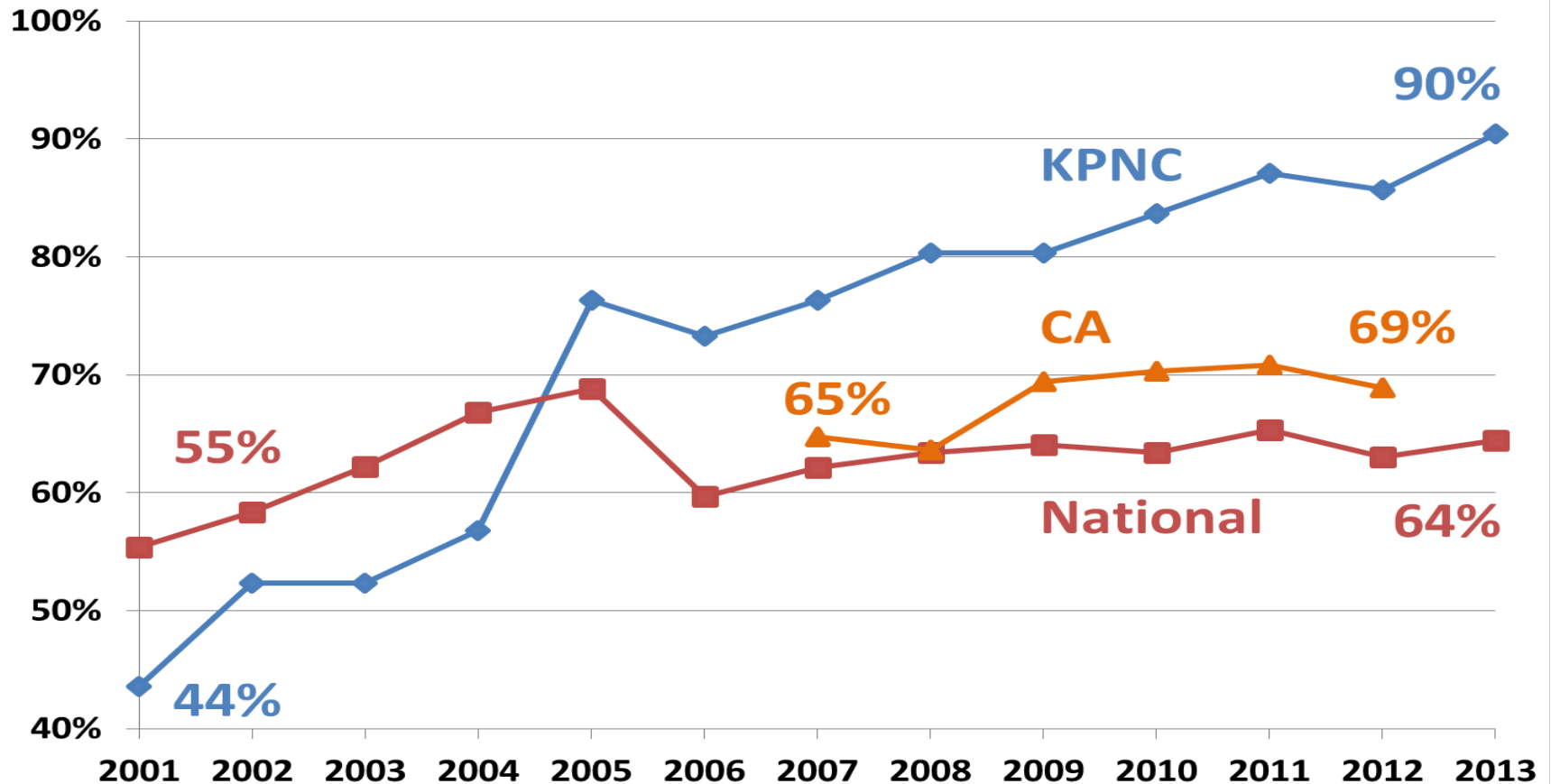


Things to Avoid:

Over work
Over excitement
Violent temper
Anything that violently increases heart action
Developing one part of the body, as the muscles, at the expense of another
Bad Air
Bathing soon after hearty meals

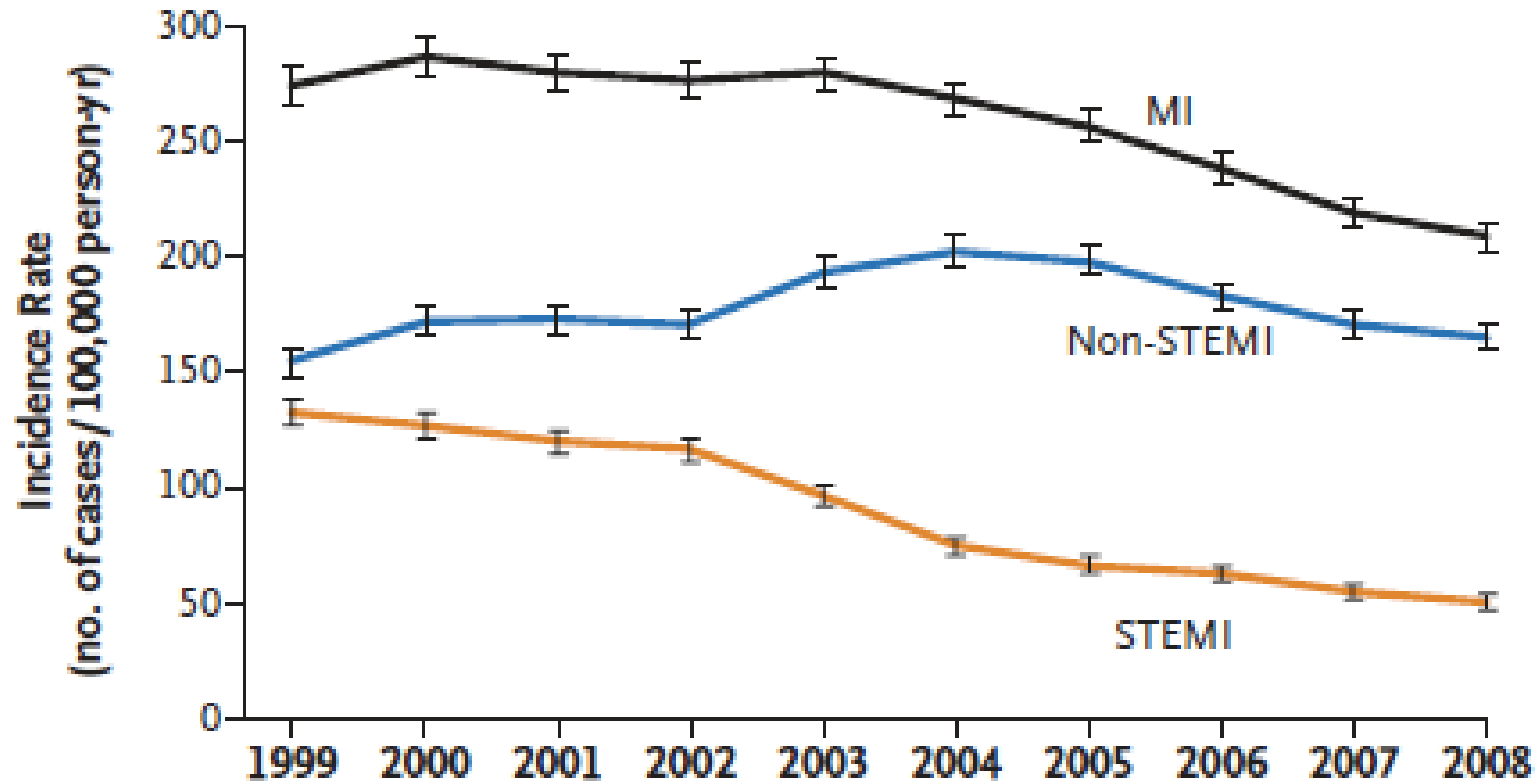
Exposure to damp and cold
Use of stimulants and narcotics
Too few hours of rest
Skinning or handling animals that have died of disease
Bathing after violent exercise
Sudden checking or perspiration, as sitting in a draft, or putting cold water on face and head when over heated

KP Northern California Hypertension Control Rates vs. California and U.S. Rates 2001-2013



Kaiser Permanente Northern California (KPNC) National Committee for Quality Assurance (NCQA) Healthcare Effectiveness Data and Information Set (HEDIS) Hypertension Control Rate vs. National and California Rates, 2001-2013

Heart Attack Rates are Falling in Kaiser Permanente Northern California



Age and Sex Adjusted Incidence Rates of Acute Myocardial Infarction (MI), Non-STEMI (Non-ST Elevation Myocardial Infarction), and STEMI (ST Elevation Myocardial Infarction) in Kaiser Permanente Northern California (KPNC), 1999-2008. (Yeh RW, et al. Population trends in the incidence and outcomes of acute myocardial infarction. N Engl J Med 2010;362:2155-165)

Translation Defined

Create Your Team

- Who does the work?
- Staff regionally and locally

Identify the Population

- Who is at risk?
- Create registry

Agree on the Treatment

- Examine the evidence
- Create/adopt guidelines

Assess Performance

- Evaluate status
- Create performance metrics

Cardiovascular Health 2015

